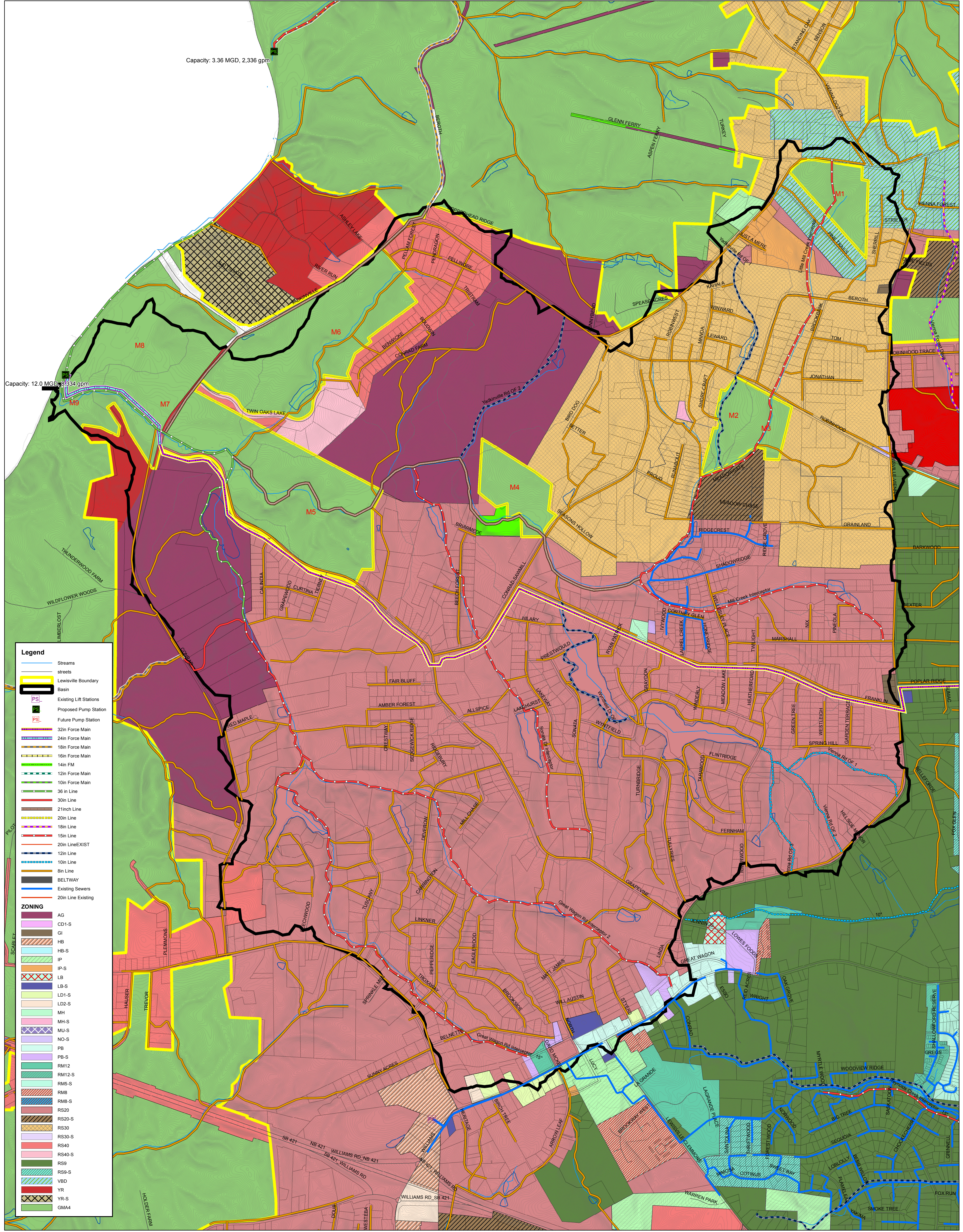


Mill GMA Sewer Lines

Capacity: 3.36 MGD, 2,336 gpm

Capacity: 12.0 MGD, 8,334 gpm

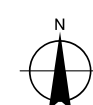


Legend

- Streams
- streets
- Lewisville Boundary
- Basin
- Existing Lift Stations
- Proposed Pump Station
- Future Pump Station
- 32in Force Main
- 24in Force Main
- 18in Force Main
- 16in Force Main
- 14in FM
- 12in Force Main
- 10in Force Main
- 36 in Line
- 30in Line
- 21inch Line
- 20in Line
- 18in Line
- 15in Line
- 20in LineEXIST
- 12in Line
- 10in Line
- 8in Line
- BELTWAY
- Existing Sewers
- 20in Line Existing

ZONING

- AG
- CD1-S
- GI
- HB
- HB-S
- IP
- IP-S
- LB
- LB-S
- LD1-S
- LD2-S
- MH
- MH-S
- MU-S
- NO-S
- PB
- PB-S
- RM12
- RM12-S
- RM5-S
- RM8
- RM8-S
- RS20
- RS20-S
- RS30
- RS30-S
- RS40
- RS40-S
- RS9
- RS9-S
- VBD
- YR
- YR-S
- GM4



09/02/16



1 inch = 700 feet

Municipal Services Engineering Company, P.A.

P.O. BOX 97 GARNER, N.C. 27529 (919) 772-5393

P.O. BOX 349 BOONE, N.C. 28607 (828) 262-1767

LICENSE NUMBER: C-0281