



# LEWISVILLE TOWNHOMES

PRELIMINARY DESIGN – Street Elevation  
Initial Elevations (4 Unit Building)

Great Wagon Road Project  
Arden Homes

NOTES:

1. All elevations to be no higher than 32' from finished grade to apex of roof.
2. Roofing material will be Architectural Shingle or Metal
3. All sides will be brick with cement board accents
4. Roof pitch of primary roof to be a maximum of 8 feet of rise in 12 feet of run
5. Eave height may vary depending on grade, but eave will be no higher than 24 feet from finished sidewalk grade



16'

PRELIMINARY DESIGN – Left Elevation

Max Building Height  
(all elevations)  
32'

Typical height  
to eave  
24'



20'

PRELIMINARY DESIGN – Right Elevation

# LEWISVILLE TOWNHOMES

Great Wagon Road Project  
Arden Homes

NOTES:

1. All elevations to be no higher than 32' from finished grade to apex of roof.
2. Roofing material will be Architectural Shingle or Metal
3. All sides will be brick with cement board accents
4. Roof pitch of primary roof to be a maximum of 8 feet of rise in 12 feet of run
5. Eave height may vary depending on grade, but eave will be no higher than 24 feet from finished sidewalk grade





# LEWISVILLE TOWNHOMES

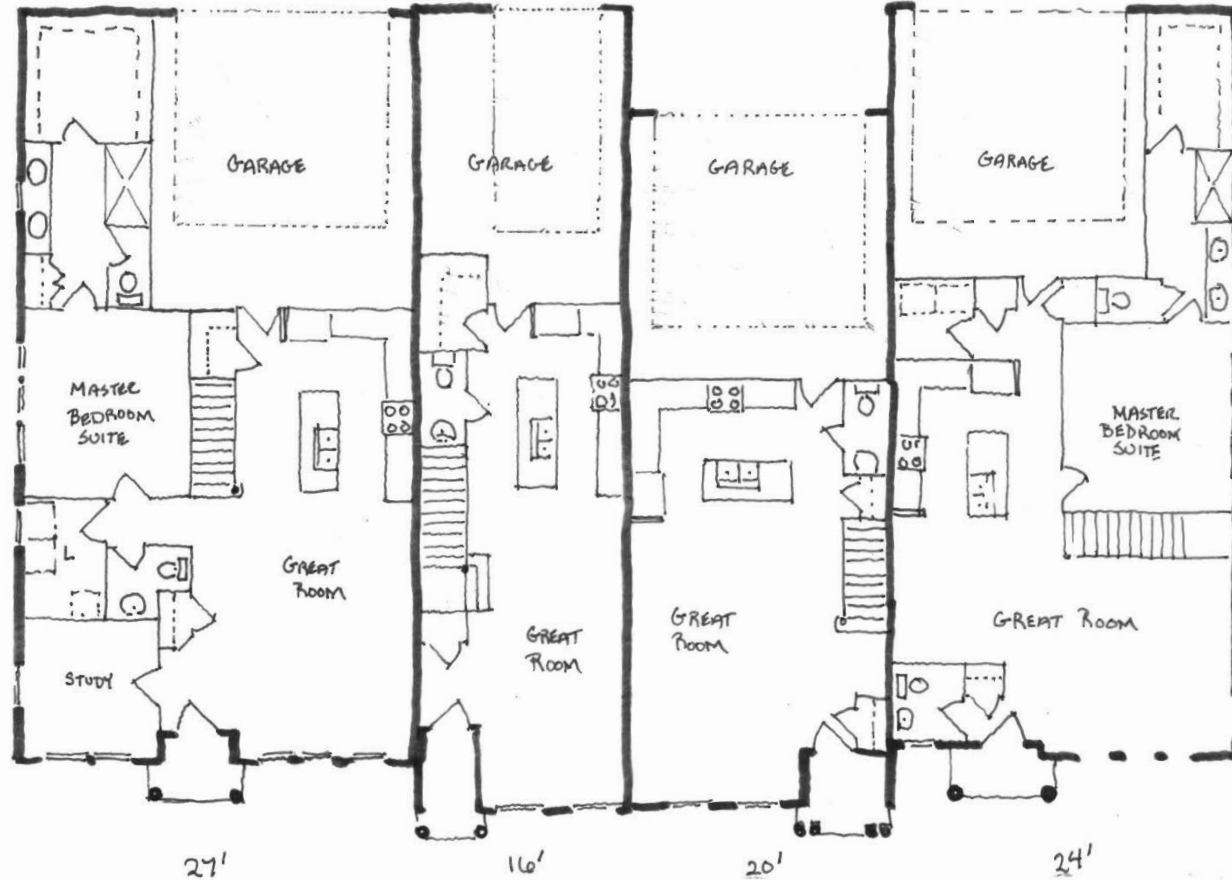
PRELIMINARY DESIGN – Rear/Alley Elevation  
Initial Elevations (4 Unit Building)

Great Wagon Road Project  
Arden Homes

#### NOTES:

1. All elevations to be no higher than 32' from finished grade to apex of roof.
2. Roofing material will be Architectural Shingle or Metal
3. All sides will be brick with cement board accents
4. Roof pitch of primary roof to be a maximum of 8 feet of rise in 12 feet of run
5. Eave height may vary depending on grade, but eave will be no higher than 24 feet from finished sidewalk grade

Rear (Alley/Lane) Side



Front (Street) Side

# LEWISVILLE TOWNHOMES

PRELIMINARY DESIGN

Initial Floor Plans

Great Wagon Road Project

Arden Homes